



Ramona Caldis

Candidate Property Practitioner
Registered with PPRA
(FFC 776 040 8)

082 449 3050

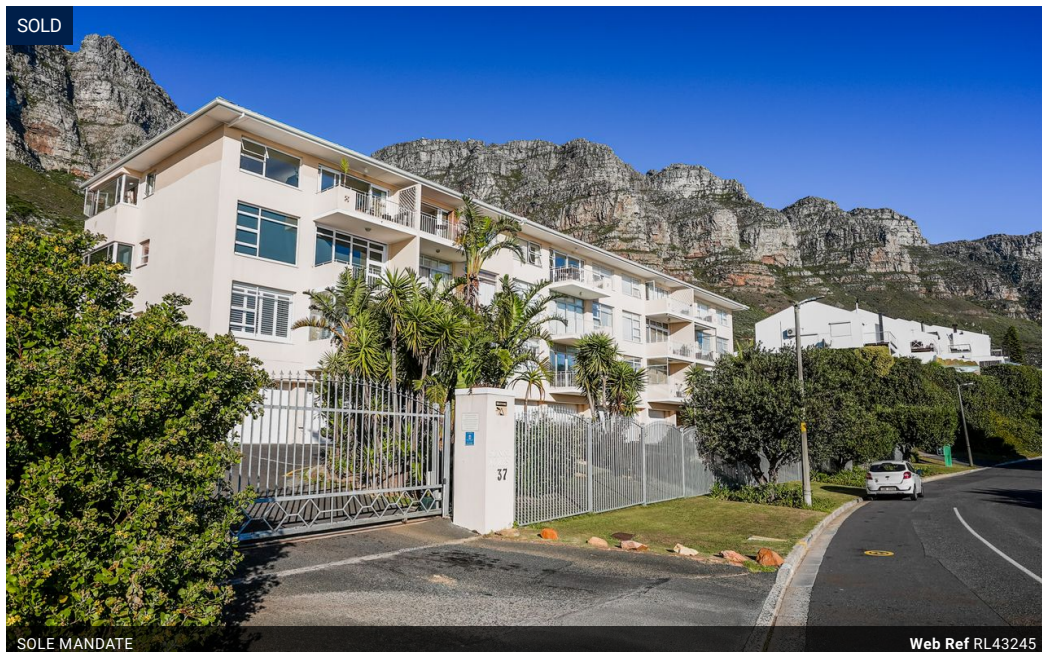
ramona.caldis@harcourts.co.za

Contact Harcourts Atlantic

021 4370013

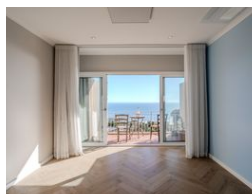
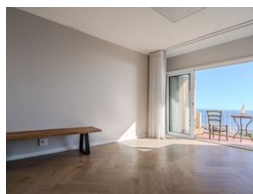
Shop 8 Central Parade
Cnr Victoria and Camps Bay Drive
Camps Bay
8005

SOLD



SOLE MANDATE

Web Ref RL43245



R4,960,000

2 1 1

Monthly Bond Repayment R50,355.36

Calculated over 20 years at 10.75% with no deposit.

Transfer Costs R397,945.00 **Bond Costs** R61,035.00

These calculations are only a guide. Please ask your conveyancer for exact calculations.

Monthly Levy R2,217.4 **Monthly Rates** R2,621.2 **Special Levy** R1,804.7

Panoramic views in Camps Bay

Imagine waking up in a serene suite nestled at the top of Camps Bay, offering stunning views of the Atlantic Ocean and Table Mountain from every window. The room is thoughtfully soundproofed for restful sleep, and opening the shutters invites a gentle sea breeze to start your day. Enjoy comfort year round with air conditioning and heating available.

The kitchen, the heart of this home, blends functionality with elegance, featuring beautifully crafted cabinetry and Smeg appliances ideal for leisurely brunches or intimate dinners. The apartment offers versatile design options, maintain two bedrooms for guests or transform one into a cozy study. Oggi flooring runs throughout.

Convenience is key with secure garage parking and additional communal off street options. A short stroll or drive takes you to Camps Bay promenade,...

Features

Interior

Bedrooms	2
Bathrooms	1
Kitchens	1
Recep. Rooms	2
Furnished	No

Exterior

Garages	1
Carports / Parkings	1
Security	Yes
Pool	No
Views	True

Sizes

Floor Size	68m ²
Land Size	2,546m ²

Extras

Air Conditioner Accommodation Above Road Air Conditioning Unit Balcony Basin Blinds Dishwasher Connection Curtain Rails Electric Gate ADSL Fridge Mountain Nature Reserve Lifestyle Secure Parking Sliding Doors Top Floor Oven & Hob Toilet Totally Fenced Electric Garage Aluminium Window Extractor Fan Oven And Hob Open Plan Communal Braai Area Open Plan Kitchen Open Plan Room Built in Wardrobes Staircase Entrance Hall

