



Byron Ambler
083 786 3131
byron.ambler@harcourts.co.za



Ramona Caldis
Candidate Property
Practitioner
Registered with PPRA

(FFC 776 040 8)

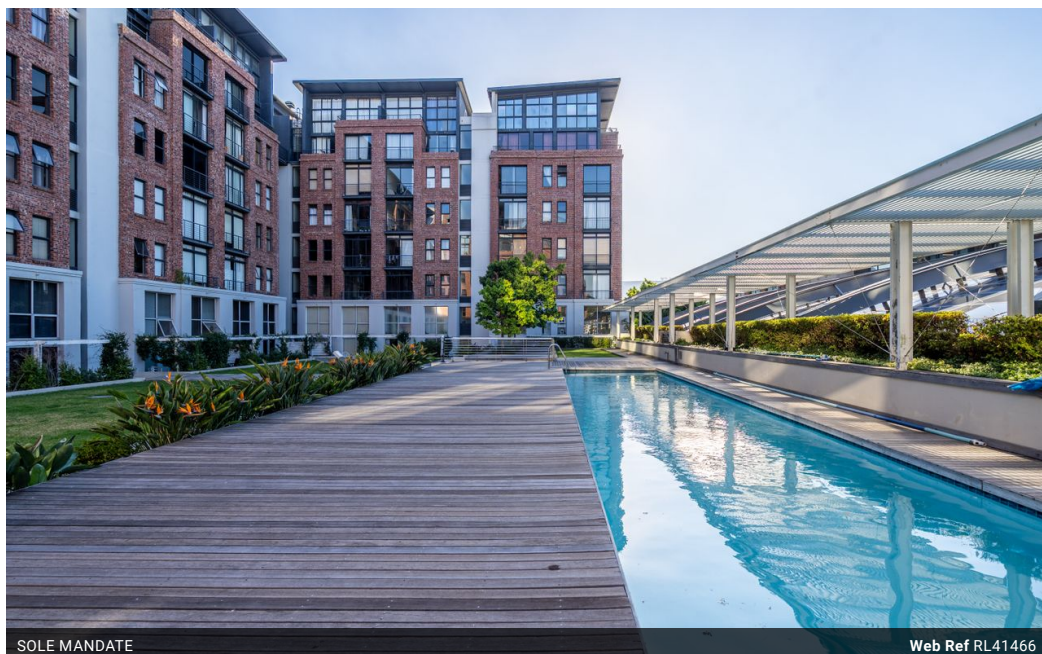
082 449 3050

ramona.caldis@harcourts.co.za

Contact Harcourts Atlantic

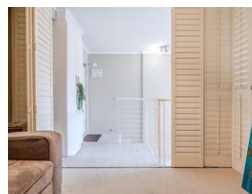
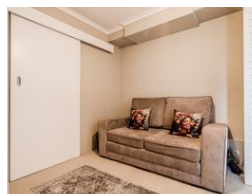
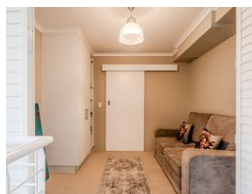
021 4370013

Shop 8 Central Parade
Cnr Victoria and Camps Bay Drive
Camps Bay
8005



SOLE MANDATE

Web Ref RL41466



R2,500,000



Monthly Bond Repayment R25,804.71

Calculated over 20 years at 11% with no deposit.

Transfer Costs R115,720.00 **Bond Costs** R38,415.00

These calculations are only a guide. Please ask your conveyancer for exact calculations.

Monthly Rates R742 **Sectional Title Levy** R2,549.5 **Special Levy** R775.0

City Living in Gardens

Discover the best of Cape Town living with this modern loft apartment in the iconic Wembley Square, right in the heart of Gardens. The spacious double volume layout boasts a private patio, secure basement parking, and a fibre ready setup for remote work, making it perfect for professionals, creatives, and savvy investors looking for a secure lock-up-and-go lifestyle.

Enjoy the convenience of on-site amenities such as a Virgin Active gym, pool, and 24-hour manned security, along with access control that ensures peace of mind. Surrounded by trendy cafés, restaurants, and boutique stores, and just a short walk from Kloof Street, the CBD, and major transport routes.

This apartment offers an exceptional opportunity to live, work, and play in one of Cape Town's most in-demand developments.

Features

Pets Allowed	Yes				
Interior		Exterior		Sizes	
Bedrooms	2	Carports / Parkings	1	Floor Size	61m²
Bathrooms	2	Security	Yes	Land Size	5,075m²
Kitchens	1	Pool	Yes		
Recep. Rooms	1	Views	True		
Furnished	No				

Extras

24 Hour Access Secure Parking On Site Security Living Area: Open Plan Living Area
Flooring:Carpet Kitchen Flooring:Tiles Bedroom1 Flooring:Carpet Bedroom2 Flooring:Carpet
Bathroom1 Flooring:Tiles Bathroom2 Flooring:Tiles Ground Floor 24 Hour Response Bath
Bath, Toilet and Basin Blinds

